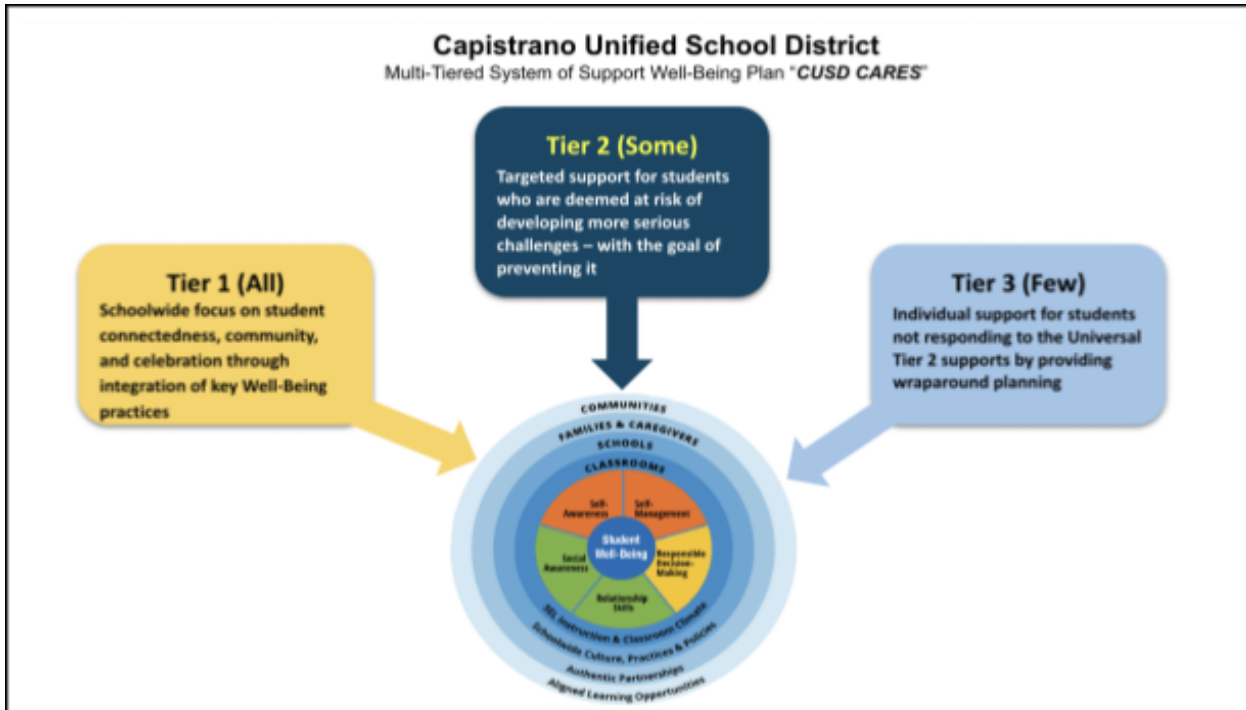
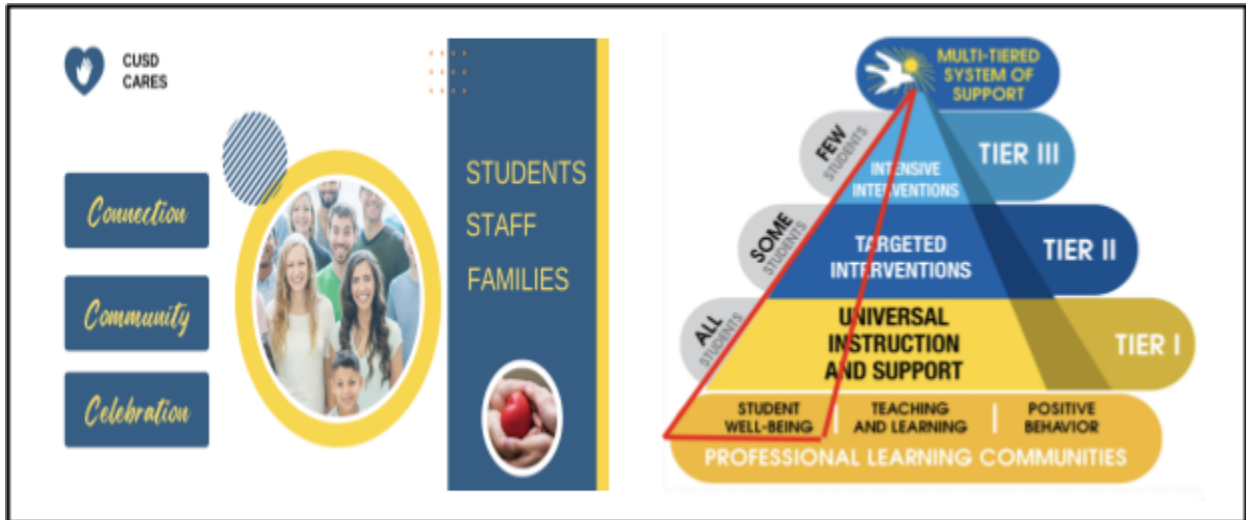


CUSD CARES Oak Grove Elementary School Multi-tiered System of Support (MTSS): Well-Being

Purpose

Goal: Effectively support all students' and staff's well-being and have a positive impact on student outcomes by intentionally developing "**connections**, a *sense of community*, and regular opportunities for **celebration**"

- **Connection:** Creating a school environment where students feel connected to their peers and the adults on campus through meaningful, daily interactions
- **Community:** Establishing an inclusive school community by developing a sense of safety and belonging for students, staff, and parents, through events, programs, and organizations
- **Celebration:** Highlighting the uniqueness of students and staff through moments that acknowledge their contributions and achievements



CUSD Oak Grove Elementary School

Multi-tiered System of Support (MTSS): Well-Being

Tier 1 - Universal (All Students): Schoolwide focus on student connectedness, community, and celebration through integration of key “Well-Being” practices:

- **Weekly “Well-being Check-In”**
- **“Be a Friend” kindness campaign (elementary schools)**
- **“You Belong Here” attendance campaign**
- Counselor support through Second Step and Cultural Proficiency Lessons
- Positive Behavior Support Tier 1 Strategies and Interventions
- Oak Grove ES examples:
 - *Administration welcomes students and families at the front of the school (music in the background)*
 - *Every student K-12 has a “Weekly Well-Being Check-in” (Well-Being Thursdays)*
 - *Intentional welcome for all new students and staff*
 - *Staff and students participate in spirit activities and other school events*
 - *PBIS, academic, and extracurricular student recognitions*

Tier 2 - Targeted (Some Students): Targeted support for students who are at risk of developing more significant challenges

- **Staff Mentor**
- **Sensory Rooms (elementary schools)**
- Targeted group counseling (Counselors & Intervention Specialists)
- Referral to counselor
- Restorative Practices
- Positive Behavior Support Tier 2 strategies and interventions
- Oak Grove ES examples:
 - *Daily check-ins with mentor*
 - *Group discussions (Counselor)*
 - *Student-Family-Site collaboration*

Tier 3 - Intensive: Individual and intentional support for students not responding to the Tier 2 supports by providing comprehensive planning and services

- **Individual 1:1 Counseling**
- **District Support Team (counselors, psychologists, High School Family Lead Administrators, and District Staff)**
- County and outside mental health referral (with parent consent)
- Partnership with family, health provider, and school site team
- Oak Grove ES examples:
 - *Frequent, calendared Individual meetings with mentor, counselor, or administrator*
 - *Home visits*
 - *Individual discussions (Counselor)*
 - *Student-Family-Site-District collaboration*